

Venue Visual Story

The Dance Centre



The Dance Centre, 677 Davie Street,
Vancouver, BC V6B 2G6

A visual story helps people prepare for a new experience
or decide if this space works for them.

This visual story was created using a template created by Anika Vervecken at the PuSh Festival
in collaboration with many partners and consultants, they are happy to share it, email
access@pushfestival.ca

What is in this Visual Story Table of Content

- 1) The Dance Centre – Location
- 2) Directions and Parking
- 3) Public Transportation
- 4) Inside the Building
- 5) Box Office
- 6) Front of House/Ushers
- 7) Downstairs Lobby
- 8) Going into the Theatre
- 9) The Stage
- 10) Washrooms
- 11) Questions?

The Dance Centre, 677 Davie Street,
Vancouver, BC V6B 2G6

About The Dance Centre

[View map on Google maps](#)

The Dance Centre is located in downtown Vancouver.
This venue is close to Emery Barnes Park and around the corner
from the VIFF Centre Movie Theatre.



Here is a picture of the front entrance.
There is an automatic door button left of the door.
There is a passenger drop off zone to the left of the door.

Directions and Parking

Driving/Parking

- Monday to Sunday \$3.91 per hour
- Paid meter parking is available

The nearest accessible parking meter spaces are at:

1100 Hornby at Davie (south side)

1200 Seymour at Drake (west side)

Walking from the parking lot to the venue



Here is a picture of the nearest parking lot.



From the parking lot, you should turn left and walk through Davie St. around 100m and you will see the venue on the left.

Public Transportation

[View map on Google maps](#)

- Bus routes #6 Davie; #4, 7, 10, 14, 16 and 50 Granville
- Yaletown-Roundhouse Station Canada Line Stop

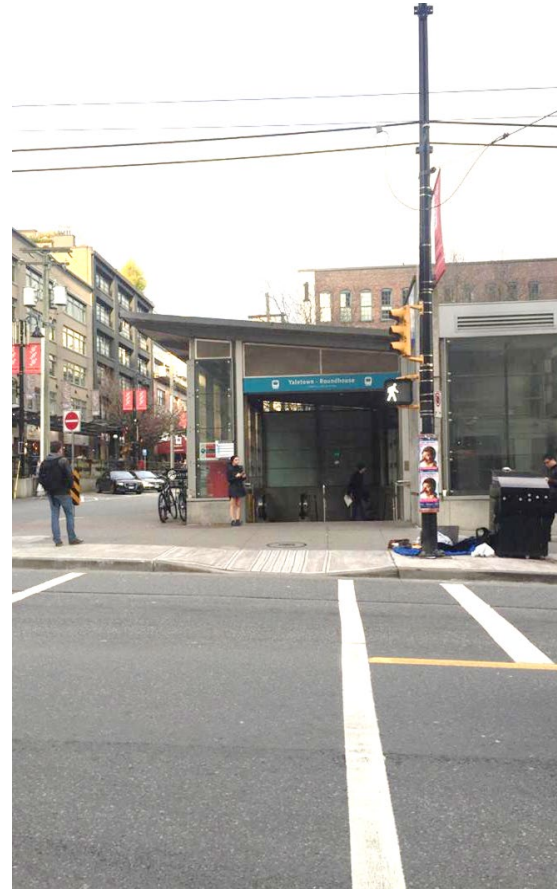


Here is a picture of the nearest train station.
Yaletown-Roundhouse Station Canada line stop.

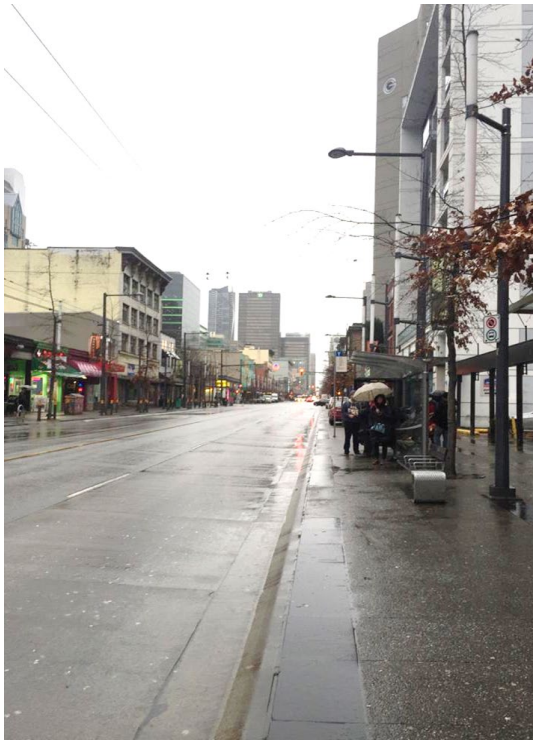
When walking from the #6 bus stop or
Yaletown-Roundhouse Station Canada Line stop



This is what the #6 bus stop looks like.
This bus station is front of the venue.

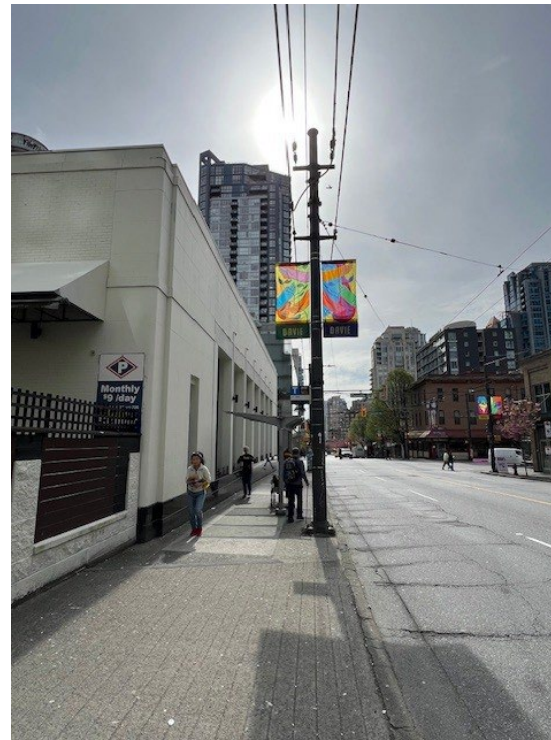


This is what the Yaletown-Roundhouse
Station Canada line stop looks like.



Bus station for #4, 7, 10, 14, 16
and 50 Granville.

When you get out from the bus you
should turn right and walk to Davie
St. and the venue will be in your left
hand.



Another bus stop for #6 (Davie St.)

Inside the Building



Here is a picture of the lobby from the front entrance.



Here is the lobby and hallway.

Box Office



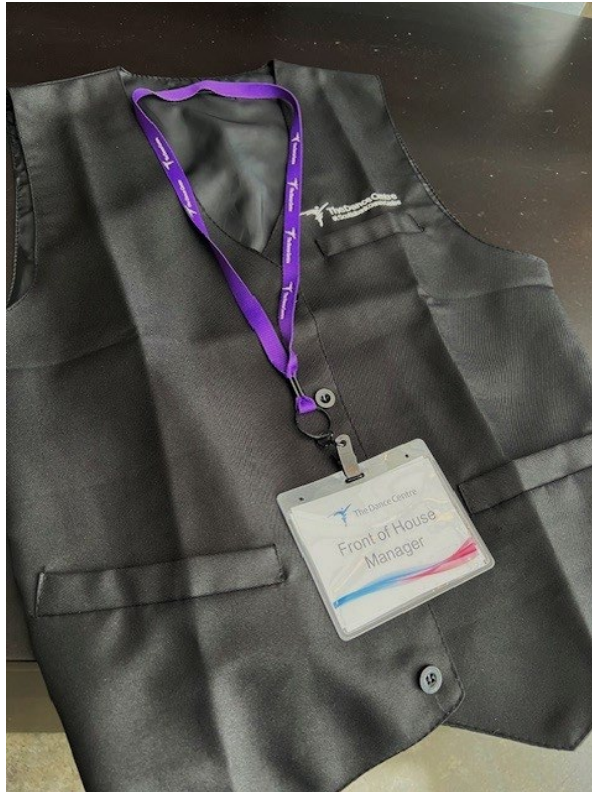
The Box Office is in the lobby.
You can buy or pick up your tickets, or ask questions.

Note: You can go downstairs to the theatre if you already have your ticket.

You can show your ticket printed or on your phone.

Front of House / Ushers

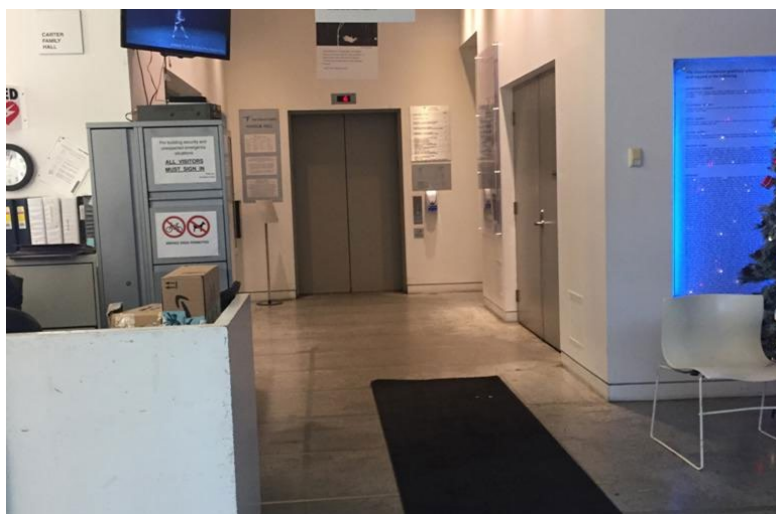
Staff and volunteers wear all black.
They wear black Dance Centre vests and have this lanyard.



If you need help, ask them!

They will be in the lobby and the theatre throughout the show.

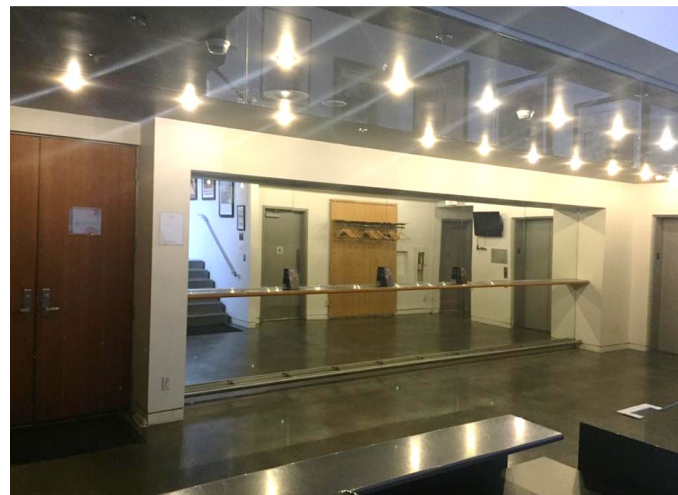
Downstairs Lobby



The theatre is one floor down. To enter the theatre from the main lobby you go down the stairs on the right side. You can also use the elevator to access the theatre: press the button for Level 1.



Here is the lower lobby as you go down the stairs. The door of the theatre is the brown door.



Here is the picture of the entrance to the theatre. When you get out from the elevator you will be in this area. The door of the theatre is the brown door.

Going into the Theatre

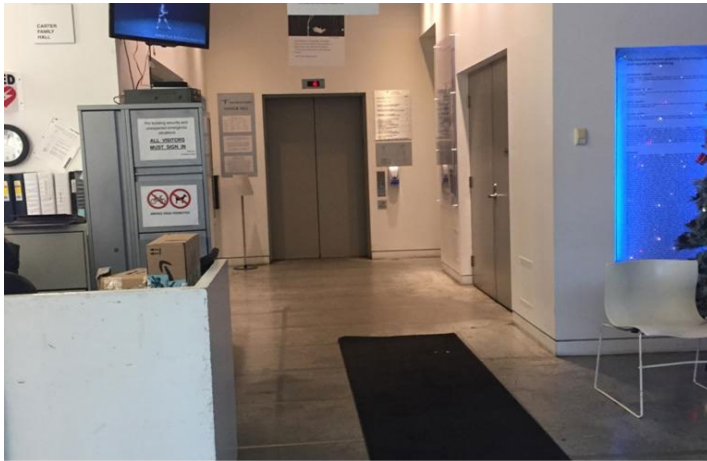


At the door someone will check your ticket.

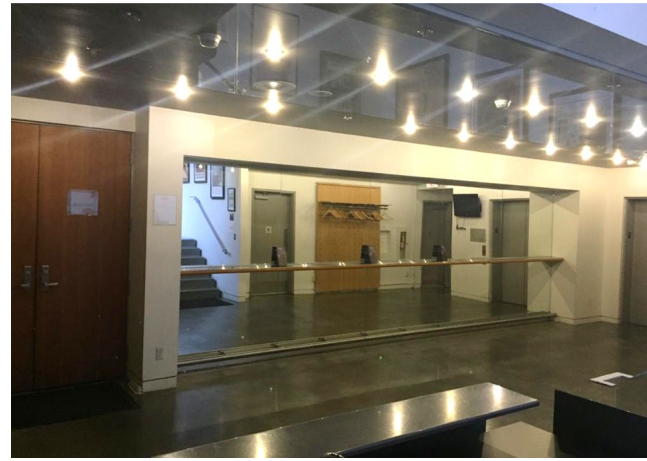


The seats have no numbers.
When you go in you can sit anywhere you like.
If you use a wheelchair, you will sit in the front row.

Going to the Theatre



To enter from the lobby you need use the stairs in the right side.
You can also use the elevator to access the theatre.



Here is the picture of the entrance to the theatre.
When you get out from the elevator you will be in this area.
The door of the theatre is the brown door.



Bar

This is the bar in the downstairs lobby.
Sometimes you can buy drinks here.

If the bar is open people can have their drink in the lobby. You can't bring drinks into the theatre except water.

The Stage



This is what the stage looks like. Sometimes the stage is empty, often there are things on the stage but it is always different.

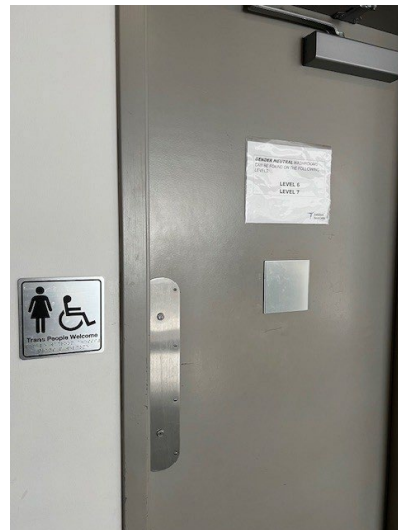


This is what the seats in the theatre look like from the stage.

Washrooms



The washrooms are in the downstairs lobby.



There is an accessible stall in each.
There are no automatic door buttons.

Gender neutral washrooms are available on the sixth and seventh floors. You can take the elevator to get to them.

Washrooms



Inside the women's washroom there are

- 2 small stalls
- 1 accessible stall
- 2 sinks



Inside the men's washroom there are

- 2 urinals
- 1 accessible stall
- 2 sinks

Questions?

If you have any questions, contact **Yurie Kaneko**.

She is the Outreach Coordinator for The Dance Centre.

You can email her:

outreach@thedancecentre.ca.

She is not here for every show.